

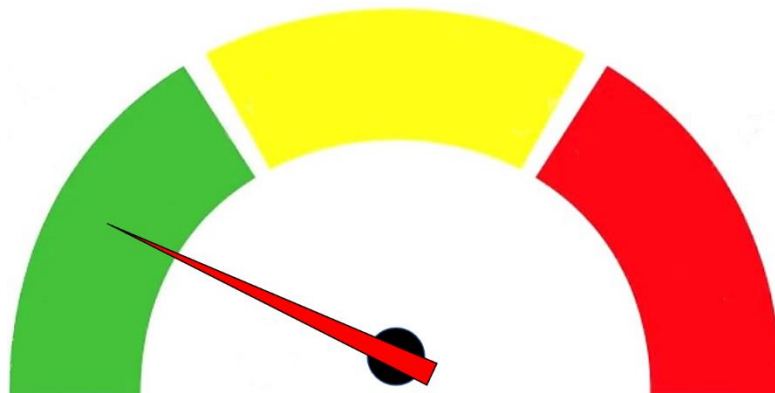


The Information provided in this document is for general purposes only to assist the user with basic understanding of the delivery location, potential maneuvering concerns in the vicinity and the recommended drive path by [TruckRouter.com](http://TruckRouter.com)™. This information does not imply or constitute mandatory directions to the user.

## 57.4 Miles. 1 hour and 32 minutes' drive.

Driving Direction	Drive for	Trip Miles	Trip Hours
<b>A</b> 1. Depart from 14601 Slover Ave, Fontana, CA 92337	0.1 mi.	0.0	0:00
➡ 2. Turn right onto Cherry Ave.	0.3 mi.	0.1	0:01
⤴ 3. Take ramp onto I-10 W (San Bernardino Fwy).	30.3 mi.	0.4	0:02
⤴ 4. Take exit 31A onto I-605 S (San Gabriel River Fwy).	2.8 mi.	30.7	0:48
⤴ 5. Take the exit toward Pomona Fwy/Los Angeles onto CA-60 (Pomona Fwy).	10.9 mi.	33.5	0:53
↑ 6. Continue on I-10 W (Santa Monica Fwy) toward Santa Monica.	1.2 mi.	44.4	1:09
⤵ 7. Keep left onto I-10 (Santa Monica Fwy).	11.1 mi.	45.7	1:11
⤴ 8. Take exit 4 toward Overland Ave.	0.3 mi.	56.8	1:29
↑ 9. Continue on National Blvd.	0.3 mi.	57.1	1:30
⤵ 10. Turn left.	⚠ 125 ft.	57.3	1:31
<b>B</b> 11. Arrive at 10850 National Blvd, Los Angeles, CA 90064	0.0 mi.	57.4	1:32

Level of Difficulty: **Low**

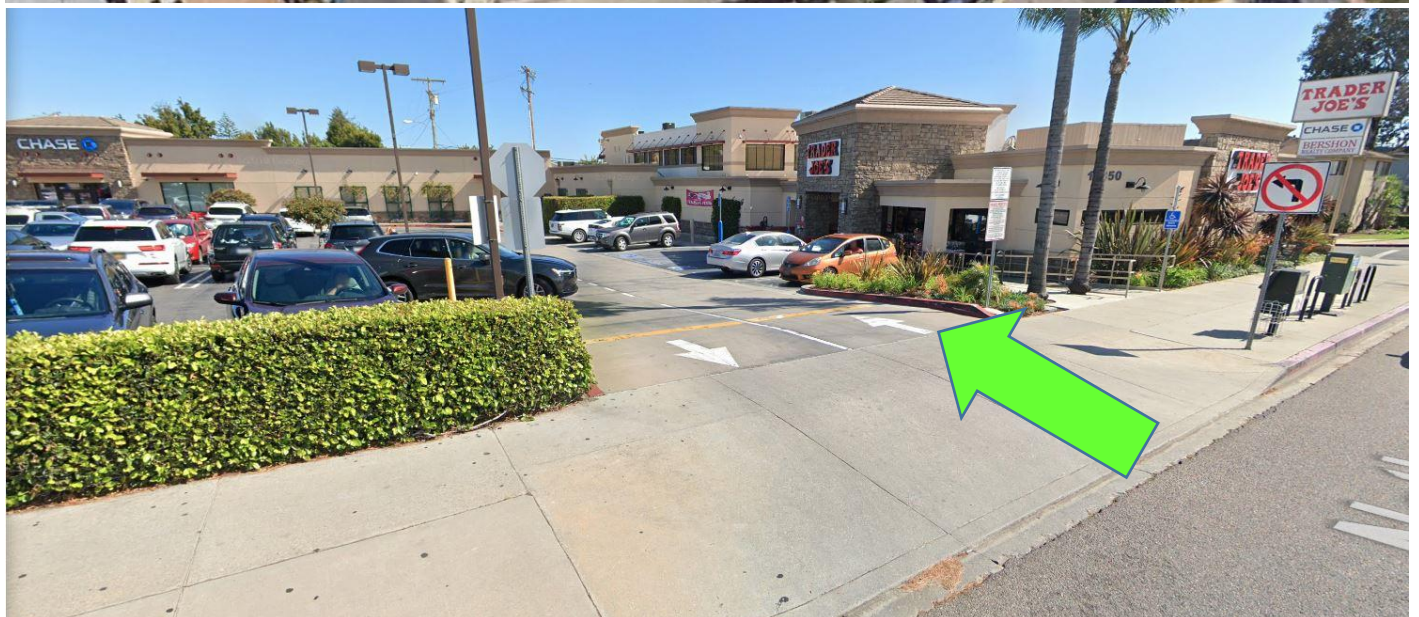
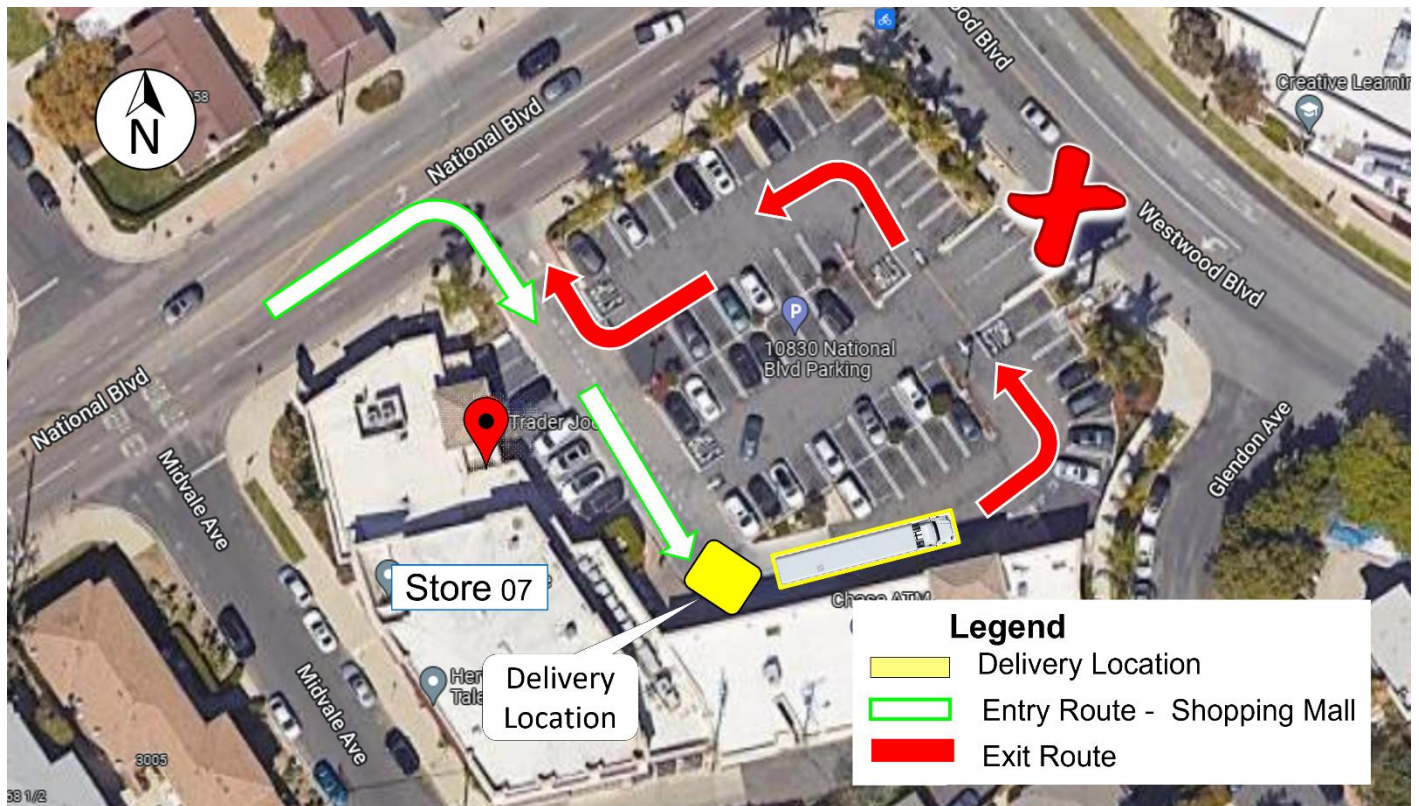




The Information provided in this document is for general purposes only to assist the user with basic understanding of the delivery location, potential maneuvering concerns in the vicinity and the recommended drive path by [TruckRouter.com](http://TruckRouter.com)™. This information does not imply or constitute mandatory directions to the user.

## Delivery Instructions: Follow directions below

1. Delivery is done in front on the store at the end of the Parking lot.
2. Turn into Parking lot from **National Blvd** and straight in.
3. **DO NOT** Enter / Exit using **Westwood Blvd**. Will **crush** trailer fuel tank.





The Information provided in this document is for general purposes only to assist the user with basic understanding of the delivery location, potential maneuvering concerns in the vicinity and the recommended drive path by [TruckRouter.com](https://www.TruckRouter.com)™. This information does not imply or constitute mandatory directions to the user.

## Delivery Area:



### Additional Delivery Instructions

1. BOL's: Ensure all BOL's are signed.
2. When leaving the store, back into the street and follow the same directions.
3. **Note: Always be courteous to the public.**
4. **If any issues, contact dispatch immediately.**